



# Analogik

ELECTRONICS CORPORATION

## DIGITAL PROCESS INDICATORS - SERIES - 101



- Three wire lead resistance compensation & cold junction compensation - Built -in.
- Drift free performance.
- Front panel access of ZERO, SPAN.
- Power supply for powering 2W transmitter available - optional.
- Retransmission output - available - optional
- Linearisation - Built-in.

### GENERAL DESCRIPTION

DIGITAL PROCESS INDICATORS are designed to display the process value like temp., pressure, flow, pH etc. These instruments accept 0/4 - 20 mA or 0/1 - 5 V DC sigals from transmitters as well as direct signals form temperature sensors. The Zero, Span adjustments are accessible from front panel. The process indicators employs state-of-the-art technology. The design having highly stable constant current source & reference supply , With very low temperature drift. The rugged DIN standard box with 2.5 mm<sup>2</sup> screw type terminals for electrical connections are the added features.

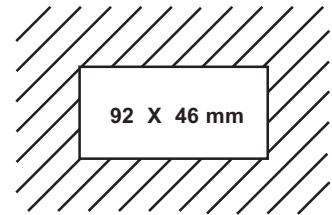
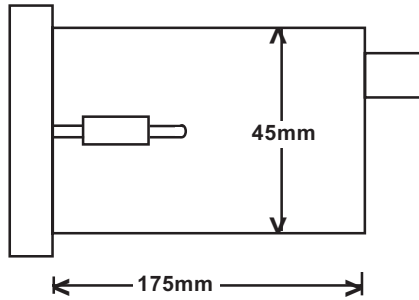
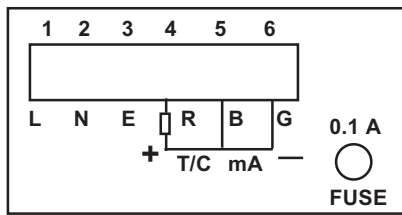
### FEATURES

- ◆ 3<sup>1/2</sup> digit & 4<sup>1/2</sup> digit 0.5" height 7 segment RED Display.
- ◆ Built-in Cold Junction compensation & three wire lead resistance compensation.
- ◆ Linearisation for Pt-100 & T/Cs.
- ◆ Accuracy +/- 0.2 % of F. S. typical.
- ◆ Front panel access of zero, span power supply for powering 2 wire transmitters available - optional.
- ◆ Rugged DIN standard enclosure.

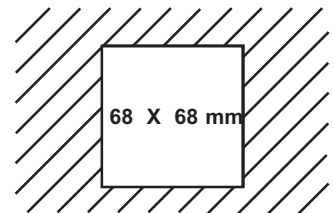
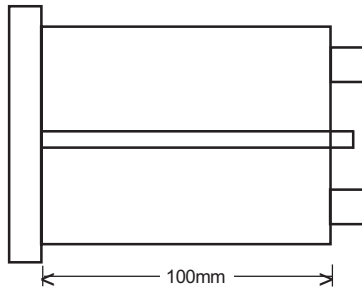
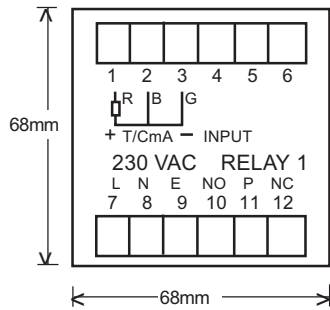
### TECHNICAL SPECIFICATIONS

INPUT	Pt-100, T/C (J,K,R,S),mA, mV Volts.
Supply	240VAC, ±10% 50Hz 110VAC, ±10% 50Hz 24VDC ±10% -optional
RANGE	-200 to +600 °C -- Pt-100 0 to 600 °C -- J type 0 to 1200 °C -- K type 0 to 1600 °C -- R,S type User Specified -- mV,mA, V
ACCURACY	±0.25 % of FULL SCALE with EPROM LINEARISATION 0.5 % of F.S.
INDICATION	3 1/2 digit RED LED display 0.5" height,for process &set values
COLD JUNCTION COMPENSATION	Built - in.
OPERATING TEMP	10 to 50 °C
OPERATING HUMIDITY	90% Rh N. C. max.
DIMENSIONS	48 X 96 X 175 mm 96 X 96 X 175 mm or 96 X 96 X 100 mm 72 X 72 X 100 mm 72 X 144 X 175 mm
CUTOUT	92 X 46 mm, 68 x 68 mm, 92 x 92 mm
MOUNTING WEIGHT	Panel Mounting 1.5 Kg approx.
MODEL SERIES	101 - 3 1/2 digit LED display
MODEL SERIES	102 - 4 1/2 digit LED display
	101R - Pt-100 input
	101M - T/C input
	101V - Voltage input
	102R - Pt-100 input
	102M - T/C input
	102C - 0/4 to 20mA input

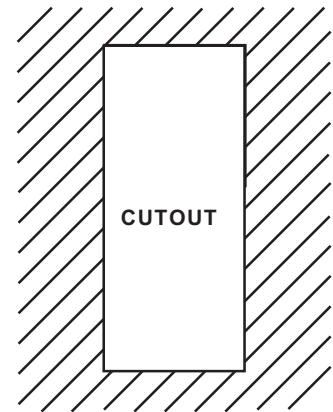
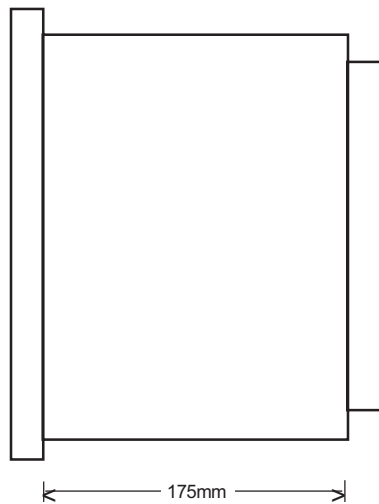
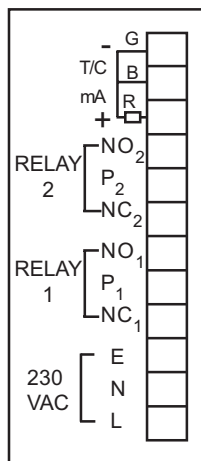
## DIMENSIONAL & ELECTRICAL CONNECTIONS



**CUTOUT**



**CUTOUT**



**CUTOUT**

### ANALOGIK ELECTRONICS CORPORATION

#### **REGD. OFFICE :**

S. NO. 250/1, D. P. ROAD, Sharda Park,

BANER, PUNE - 411 007, INDIA

TEL. - (020) 25888688 TELEFAX - (020) 25888688

E-mail - analogik@vsnl.com

### AREA REPRESENTATIVE